

[MS-CSSP]:

Credential Security Support Provider (CredSSP) Protocol

Intellectual Property Rights Notice for Open Specifications Documentation

- **Technical Documentation.** Microsoft publishes Open Specifications documentation (“this documentation”) for protocols, file formats, data portability, computer languages, and standards support. Additionally, overview documents cover inter-protocol relationships and interactions.
- **Copyrights.** This documentation is covered by Microsoft copyrights. Regardless of any other terms that are contained in the terms of use for the Microsoft website that hosts this documentation, you can make copies of it in order to develop implementations of the technologies that are described in this documentation and can distribute portions of it in your implementations that use these technologies or in your documentation as necessary to properly document the implementation. You can also distribute in your implementation, with or without modification, any schemas, IDLs, or code samples that are included in the documentation. This permission also applies to any documents that are referenced in the Open Specifications documentation.
- **No Trade Secrets.** Microsoft does not claim any trade secret rights in this documentation.
- **Patents.** Microsoft has patents that might cover your implementations of the technologies described in the Open Specifications documentation. Neither this notice nor Microsoft's delivery of this documentation grants any licenses under those patents or any other Microsoft patents. However, a given Open Specifications document might be covered by the Microsoft [Open Specifications Promise](#) or the [Microsoft Community Promise](#). If you would prefer a written license, or if the technologies described in this documentation are not covered by the Open Specifications Promise or Community Promise, as applicable, patent licenses are available by contacting iplg@microsoft.com.
- **License Programs.** To see all of the protocols in scope under a specific license program and the associated patents, visit the [Patent Map](#).
- **Trademarks.** The names of companies and products contained in this documentation might be covered by trademarks or similar intellectual property rights. This notice does not grant any licenses under those rights. For a list of Microsoft trademarks, visit www.microsoft.com/trademarks.
- **Fictitious Names.** The example companies, organizations, products, domain names, email addresses, logos, people, places, and events that are depicted in this documentation are fictitious. No association with any real company, organization, product, domain name, email address, logo, person, place, or event is intended or should be inferred.

Reservation of Rights. All other rights are reserved, and this notice does not grant any rights other than as specifically described above, whether by implication, estoppel, or otherwise.

Tools. The Open Specifications documentation does not require the use of Microsoft programming tools or programming environments in order for you to develop an implementation. If you have access to Microsoft programming tools and environments, you are free to take advantage of them. Certain Open Specifications documents are intended for use in conjunction with publicly available standards specifications and network programming art and, as such, assume that the reader either is familiar with the aforementioned material or has immediate access to it.

Support. For questions and support, please contact dochelp@microsoft.com.

Revision Summary

Date	Revision History	Revision Class	Comments
12/18/2006	0.1	New	Version 0.1 release
3/2/2007	1.0	Major	Version 1.0 release
4/3/2007	1.1	Minor	Version 1.1 release
5/11/2007	1.2	Minor	Version 1.2 release
6/1/2007	1.2.1	Editorial	Changed language and formatting in the technical content.
7/3/2007	1.2.2	Editorial	Changed language and formatting in the technical content.
7/20/2007	1.2.3	Editorial	Changed language and formatting in the technical content.
8/10/2007	1.2.4	Editorial	Changed language and formatting in the technical content.
9/28/2007	1.2.5	Editorial	Changed language and formatting in the technical content.
10/23/2007	1.3	Minor	Clarified the meaning of the technical content.
11/30/2007	1.3.1	Editorial	Changed language and formatting in the technical content.
1/25/2008	1.3.2	Editorial	Changed language and formatting in the technical content.
3/14/2008	1.3.3	Editorial	Changed language and formatting in the technical content.
5/16/2008	1.3.4	Editorial	Changed language and formatting in the technical content.
6/20/2008	1.3.5	Editorial	Changed language and formatting in the technical content.
7/25/2008	1.3.6	Editorial	Changed language and formatting in the technical content.
8/29/2008	1.3.7	Editorial	Changed language and formatting in the technical content.
10/24/2008	1.3.8	Editorial	Changed language and formatting in the technical content.
12/5/2008	2.0	Major	Updated and revised the technical content.
1/16/2009	2.0.1	Editorial	Changed language and formatting in the technical content.
2/27/2009	2.0.2	Editorial	Changed language and formatting in the technical content.
4/10/2009	2.0.3	Editorial	Changed language and formatting in the technical content.
5/22/2009	3.0	Major	Updated and revised the technical content.
7/2/2009	3.0.1	Editorial	Changed language and formatting in the technical content.
8/14/2009	3.0.2	Editorial	Changed language and formatting in the technical content.
9/25/2009	3.1	Minor	Clarified the meaning of the technical content.
11/6/2009	4.0	Major	Updated and revised the technical content.
12/18/2009	4.0.1	Editorial	Changed language and formatting in the technical content.
1/29/2010	5.0	Major	Updated and revised the technical content.
3/12/2010	5.0.1	Editorial	Changed language and formatting in the technical content.

Date	Revision History	Revision Class	Comments
4/23/2010	6.0	Major	Updated and revised the technical content.
6/4/2010	6.0.1	Editorial	Changed language and formatting in the technical content.
7/16/2010	6.0.1	None	No changes to the meaning, language, or formatting of the technical content.
8/27/2010	6.0.1	None	No changes to the meaning, language, or formatting of the technical content.
10/8/2010	6.0.1	None	No changes to the meaning, language, or formatting of the technical content.
11/19/2010	6.0.1	None	No changes to the meaning, language, or formatting of the technical content.
1/7/2011	6.0.1	None	No changes to the meaning, language, or formatting of the technical content.
2/11/2011	6.0.1	None	No changes to the meaning, language, or formatting of the technical content.
3/25/2011	6.0.1	None	No changes to the meaning, language, or formatting of the technical content.
5/6/2011	6.0.1	None	No changes to the meaning, language, or formatting of the technical content.
6/17/2011	6.1	Minor	Clarified the meaning of the technical content.
9/23/2011	6.1	None	No changes to the meaning, language, or formatting of the technical content.
12/16/2011	7.0	Major	Updated and revised the technical content.
3/30/2012	7.0	None	No changes to the meaning, language, or formatting of the technical content.
7/12/2012	7.0	None	No changes to the meaning, language, or formatting of the technical content.
10/25/2012	7.0	None	No changes to the meaning, language, or formatting of the technical content.
1/31/2013	8.0	Major	Updated and revised the technical content.
8/8/2013	9.0	Major	Updated and revised the technical content.
11/14/2013	9.0	None	No changes to the meaning, language, or formatting of the technical content.
2/13/2014	10.0	Major	Updated and revised the technical content.
5/15/2014	11.0	Major	Updated and revised the technical content.
6/30/2015	12.0	Major	Significantly changed the technical content.
10/16/2015	12.0	None	No changes to the meaning, language, or formatting of the technical content.
7/14/2016	13.0	Major	Significantly changed the technical content.

Date	Revision History	Revision Class	Comments
6/1/2017	14.0	Major	Significantly changed the technical content.
9/15/2017	15.0	Major	Significantly changed the technical content.

Table of Contents

1	Introduction	6
1.1	Glossary	6
1.2	References	7
1.2.1	Normative References	7
1.2.2	Informative References	8
1.3	Overview	8
1.4	Relationship to Other Protocols	9
1.5	Prerequisites/Preconditions	9
1.6	Applicability Statement	10
1.7	Versioning and Capability Negotiation	10
1.8	Vendor-Extensible Fields	10
1.9	Standards Assignments.....	10
2	Messages.....	11
2.1	Transport	11
2.2	Message Syntax	11
2.2.1	TSRequest	11
2.2.1.1	NegoData.....	12
2.2.1.2	TSCredentials	12
2.2.1.2.1	TSPasswordCreds	12
2.2.1.2.2	TSSmartCardCreds	13
2.2.1.2.2.1	TSCspDataDetail	13
2.2.1.2.3	TSRemoteGuardCreds	13
2.2.1.2.3.1	TSRemoteGuardPackageCred	14
3	Protocol Details	15
3.1	Common Details	15
3.1.1	Abstract Data Model.....	15
3.1.2	Timers	15
3.1.3	Initialization	15
3.1.4	Higher-Layer Triggered Events	15
3.1.5	Processing Events and Sequencing Rules	15
3.1.6	Timer Events.....	16
3.1.7	Other Local Events.....	16
4	Protocol Examples	17
5	Security	19
5.1	Security Considerations for Implementers	19
5.2	Index of Security Parameters	19
6	Appendix A: Product Behavior	20
7	Change Tracking.....	23
8	Index.....	24

1 Introduction

The Credential Security Support Provider (CredSSP) Protocol enables an application to securely delegate a user's **credentials** from a client to a target server. This protocol first establishes an encrypted channel between the client and the target server by using **Transport Layer Security (TLS)** (as specified in [\[RFC2246\]](#)). The CredSSP Protocol uses TLS as an encrypted pipe; it does not rely on the client/server authentication services that are available in TLS. The CredSSP Protocol then uses the protocol extensions described in [\[MS-SPNG\]](#) to negotiate a **Generic Security Services (GSS)** mechanism that performs **mutual authentication** and GSS confidentiality services to securely bind to the TLS channel and encrypt the credentials for the target server. All GSS security tokens are sent over the encrypted TLS channel.

Sections 1.5, 1.8, 1.9, 2, and 3 of this specification are normative. All other sections and examples in this specification are informative.

1.1 Glossary

This document uses the following terms:

application protocol: A network protocol that visibly accomplishes the task that the user or other agent wants to perform. This is distinguished from all manner of support protocols: from Ethernet or IP at the bottom to security and routing protocols. While necessary, these are not always visible to the user. Application protocols include, for instance, HTTP and Server Message Block (SMB).

certification authority (CA): A third party that issues public key certificates. Certificates serve to bind public keys to a user identity. Each user and certification authority (CA) can decide whether to trust another user or CA for a specific purpose, and whether this trust should be transitive. For more information, see [\[RFC3280\]](#).

credential: Previously established, authentication data that is used by a security principal to establish its own identity. When used in reference to the Netlogon Protocol, it is the data that is stored in the NETLOGON_CREDENTIAL structure.

CredSSP client: Any application that executes the role of the client as prescribed by the [\[MS-CSSP\]](#) Protocol described in this document.

CredSSP server: Any application that executes the role of the server as prescribed by the [\[MS-CSSP\]](#) Protocol described in this document.

domain: A set of users and computers sharing a common namespace and management infrastructure. At least one computer member of the set must act as a domain controller (DC) and host a member list that identifies all members of the domain, as well as optionally hosting the Active Directory service. The domain controller provides authentication of members, creating a unit of trust for its members. Each domain has an identifier that is shared among its members. For more information, see [\[MS-AUTHSOD\]](#) section 1.1.1.5 and [\[MS-ADTS\]](#).

Generic Security Services (GSS): An Internet standard, as described in [\[RFC2743\]](#), for providing security services to applications. It consists of an application programming interface (GSS-API) set, as well as standards that describe the structure of the security data.

Kerberos: An authentication system that enables two parties to exchange private information across an otherwise open network by assigning a unique key (called a ticket) to each user that logs on to the network and then embedding these tickets into messages sent by the users. For more information, see [\[MS-KILE\]](#).

mutual authentication: A mode in which each party verifies the identity of the other party, as described in [\[RFC3748\]](#) section 7.2.1.

NT LAN Manager (NTLM) Authentication Protocol: A protocol using a challenge-response mechanism for authentication in which clients are able to verify their identities without sending a password to the server. It consists of three messages, commonly referred to as Type 1 (negotiation), Type 2 (challenge) and Type 3 (authentication). For more information, see [\[MS-NLMP\]](#).

public key infrastructure (PKI): The laws, policies, standards, and software that regulate or manipulate certificates and public and private keys. In practice, it is a system of digital certificates, **certificate authorities (CAs)**, and other registration authorities that verify and authenticate the validity of each party involved in an electronic transaction. For more information, see [\[X509\]](#) section 6.

security protocol: A protocol that performs authentication and possibly additional security services on a network.

service principal name (SPN): The name a client uses to identify a service for mutual authentication. (For more information, see [\[RFC1964\]](#) section 2.1.1.) An **SPN** consists of either two parts or three parts, each separated by a forward slash ('/'). The first part is the service class, the second part is the host name, and the third part (if present) is the service name. For example, "ldap/dc-01.fabrikam.com/fabrikam.com" is a three-part **SPN** where "ldap" is the service class name, "dc-01.fabrikam.com" is the host name, and "fabrikam.com" is the service name. See [\[SPNAMES\]](#) for more information about **SPN** format and composing a unique **SPN**.

Simple and Protected GSS-API Negotiation Mechanism (SPNEGO): An authentication mechanism that allows **Generic Security Services (GSS)** peers to determine whether their credentials support a common set of GSS-API security mechanisms, to negotiate different options within a given security mechanism or different options from several security mechanisms, to select a service, and to establish a security context among themselves using that service. **SPNEGO** is specified in [\[RFC4178\]](#).

Transport Layer Security (TLS): A security protocol that supports confidentiality and integrity of messages in client and server applications communicating over open networks. **TLS** supports server and, optionally, client authentication by using X.509 certificates (as specified in [\[X509\]](#)). **TLS** is standardized in the IETF TLS working group.

trust: To accept another authority's statements for the purposes of authentication and authorization, especially in the case of a relationship between two domains. If **domain A** trusts **domain B**, **domain A** accepts **domain B**'s authentication and authorization statements for principals represented by security principal objects in **domain B**; for example, the list of groups to which a particular user belongs. As a noun, a **trust** is the relationship between two **domains** described in the previous sentence.

MAY, SHOULD, MUST, SHOULD NOT, MUST NOT: These terms (in all caps) are used as defined in [\[RFC2119\]](#). All statements of optional behavior use either MAY, SHOULD, or SHOULD NOT.

1.2 References

Links to a document in the Microsoft Open Specifications library point to the correct section in the most recently published version of the referenced document. However, because individual documents in the library are not updated at the same time, the section numbers in the documents may not match. You can confirm the correct section numbering by checking the [Errata](#).

1.2.1 Normative References

We conduct frequent surveys of the normative references to assure their continued availability. If you have any issue with finding a normative reference, please contact dochelp@microsoft.com. We will assist you in finding the relevant information.

- [MS-ERREF] Microsoft Corporation, "[Windows Error Codes](#)".
- [MS-KILE] Microsoft Corporation, "[Kerberos Protocol Extensions](#)".
- [MS-NLMP] Microsoft Corporation, "[NT LAN Manager \(NTLM\) Authentication Protocol](#)".
- [MS-RDPEAR] Microsoft Corporation, "[Remote Desktop Protocol Authentication Redirection Virtual Channel](#)".
- [MS-SPNG] Microsoft Corporation, "[Simple and Protected GSS-API Negotiation Mechanism \(SPNEGO\) Extension](#)".
- [RFC2078] Linn, J., "Generic Security Service Application Program Interface, Version 2", RFC 2078, January 1997, <http://www.ietf.org/rfc/rfc2078.txt>
- [RFC2119] Bradner, S., "Key words for use in RFCs to Indicate Requirement Levels", BCP 14, RFC 2119, March 1997, <http://www.rfc-editor.org/rfc/rfc2119.txt>
- [RFC2246] Dierks, T., and Allen, C., "The TLS Protocol Version 1.0", RFC 2246, January 1999, <http://www.rfc-editor.org/rfc/rfc2246.txt>
- [RFC3280] Housley, R., Polk, W., Ford, W., and Solo, D., "Internet X.509 Public Key Infrastructure Certificate and Certificate Revocation List (CRL) Profile", RFC 3280, April 2002, <http://www.ietf.org/rfc/rfc3280.txt>
- [RFC4120] Neuman, C., Yu, T., Hartman, S., and Raeburn, K., "The Kerberos Network Authentication Service (V5)", RFC 4120, July 2005, <http://www.rfc-editor.org/rfc/rfc4120.txt>
- [RFC4178] Zhu, L., Leach, P., Jaganathan, K., and Ingersoll, W., "The Simple and Protected Generic Security Service Application Program Interface (GSS-API) Negotiation Mechanism", RFC 4178, October 2005, <http://www.rfc-editor.org/rfc/rfc4178.txt>
- [RFC793] Postel, J., Ed., "Transmission Control Protocol: DARPA Internet Program Protocol Specification", RFC 793, September 1981, <http://www.rfc-editor.org/rfc/rfc793.txt>
- [X690] ITU-T, "Information Technology - ASN.1 Encoding Rules: Specification of Basic Encoding Rules (BER), Canonical Encoding Rules (CER) and Distinguished Encoding Rules (DER)", Recommendation X.690, July 2002, <http://www.itu.int/rec/T-REC-X.690/en>

1.2.2 Informative References

None.

1.3 Overview

The Credential Security Support Provider (CredSSP) Protocol enables an application to securely delegate a user's **credentials** from a client to a target server. For example, the Microsoft Terminal Server uses the CredSSP Protocol to securely delegate the user's password or smart card PIN from the client to the server to remotely log on the user and establish a terminal services session. [<1>](#)

Policy settings control whether a client delegates the user's credentials in order to assure that the user's credentials are not delegated to an unauthorized server (a computer under the administrative control of an attacker). Although **trust** might exist to facilitate authentication between the client and server, it does not mean that the target server is trusted with the user's credentials. [<2>](#) For example, trust might be based on the **Kerberos** Protocol [\[RFC4120\]](#) or **NTLM** [\[MS-NLMP\]](#).

The CredSSP Protocol is a composite protocol that relies on other standards-based **security protocols**. It first uses the **Transport Layer Security (TLS) Protocol** to establish an encrypted

channel between the **CredSSP client** and the **CredSSP server**. (The client is anonymous at this point; the client and the server might have no common trusted **certification authority (CA)** root.)

All subsequent messages are sent over this channel. The CredSSP Protocol then uses the Simple and Protected Generic Security Service Application Program Interface Negotiation Mechanism (**SPNEGO**) to authenticate the user and server in the encrypted TLS session. (SPNEGO is specified in [\[MS-SPNG\]](#).)

SPNEGO provides a framework for two parties that are engaged in authentication to select from a set of possible authentication mechanisms. This framework provides selection in a manner that preserves the opaque nature of the security protocols to the **application protocol** that uses SPNEGO. In this case, the CredSSP Protocol is the application protocol that uses SPNEGO.

The CredSSP Protocol uses SPNEGO to mutually authenticate the CredSSP client and CredSSP server. It then uses the encryption key that is established under SPNEGO to securely bind to the TLS session (the process by which the server's public key that is used in the TLS handshake is authenticated). The client encrypts the server's public key by using the encryption key that is established under SPNEGO and sends it to the server. The server verifies that it is the same public key that was used in the TLS handshake and sends an acknowledgment (also encrypted under the SPNEGO encryption key) back to the client. (For more information about this step, see section [3.1.1](#).) Lastly, the client sends the user's credentials, which are encrypted under the SPNEGO encryption key, to the server.

All subsequent data that is sent between the client and server application by using the CredSSP Protocol is encrypted under TLS. The only new on-the-wire formats that are introduced by the CredSSP Protocol are the encapsulation of the SPNEGO tokens sent over the TLS channel, the binding between the TLS and SPNEGO protocols, and the format of the user credentials.

1.4 Relationship to Other Protocols

The CredSSP Protocol uses the **TLS** Protocol, as specified in [\[RFC2246\]](#), to encrypt all traffic between the **CredSSP client** and the **CredSSP server**. The TLS Protocol requires a reliable transport, such as TCP (as specified in [\[RFC793\]](#)), for all messages that are exchanged between the client and the server.

The CredSSP Protocol typically uses **SPNEGO** [\[MS-SPNG\]](#) for **mutual authentication** between the CredSSP client and CredSSP server and can use **Kerberos** [\[MS-KILE\]](#) and **NTLM** [\[MS-NLMP\]](#).^{<3>} SPNEGO requires that at least one other authentication protocol be present that is compatible with **Generic Security Services (GSS)** [\[RFC2078\]](#) (in addition to SPNEGO itself); otherwise, SPNEGO will not work. SPNEGO has no dependence on any specific GSS-compatible protocols; however, the Kerberos Protocol [\[MS-KILE\]](#) is typically used.^{<4>}

The Remote Desktop Protocol (RDP) uses the CredSSP Protocol to delegate **credentials** from the RDP client to the RDP server and to encrypt all data that follows by using the TLS channel that is established as part of the CredSSP Protocol.

1.5 Prerequisites/Preconditions

The CredSSP Protocol assumes the following:

- The **CredSSP client** MUST have access to the user's **credentials** (the CredSSP Protocol delegates these credentials to the **CredSSP server**).^{<5>}
- A source of cryptographically useful random numbers MUST be available on the client and server for generating a nonce that is used by the **TLS** Protocol.
- The CredSSP server MUST have an X.509 certificate (as specified in [\[RFC3280\]](#)) for use in TLS. The certificate can be self-signed or issued by a third-party **certification authority**. The CredSSP Protocol does not assume a common certification authority root between the client and the server.

- The CredSSP Protocol uses the **SPNEGO** protocol for mutual client/server authentication; at least one other GSS-compatible authentication protocol, in addition to the CredSSP Protocol, **MUST** be present for it to work. [<6>](#)

1.6 Applicability Statement

The CredSSP protocol delegates the user's **credentials** from a client to a server over a **mutually authenticated** encrypted channel. To avoid revealing the user credentials to unauthorized hosts, the **CredSSP client** delegates only to **trusted** servers, as expressed through the security policy that governs the client's computer. The CredSSP protocol was designed to enable the server to impersonate the client across a number of different applications that require the user's long-lived credentials (password).

1.7 Versioning and Capability Negotiation

Versioning and capability negotiation are supported in the CredSSP Protocol as follows:

- Protocol versions: The CredSSP Protocol supports versioning (the version field of the TSRequest structure, section [2.2.1](#)); however, version 2.0 is currently the only available version.
- Security and authentication methods: The CredSSP Protocol uses the **SPNEGO** protocol to negotiate the underlying authentication mechanism. Similarly, the CredSSP Protocol relies on the **TLS** Protocol to negotiate the cryptographic algorithms that are used for channel confidentiality and integrity.
- Localization: The CredSSP Protocol is not localization dependent.

1.8 Vendor-Extensible Fields

The CredSSP Protocol does not have any vendor-extensible fields.

1.9 Standards Assignments

The CredSSP Protocol does not have any standards assignments. Standards assignments for the **Simple and Protected GSS-API Negotiation Mechanism (SPNEGO)**, **Kerberos**, **NTLM**, and **TLS** Protocols are specified in [\[MS-SPNG\]](#) section 1.9, [\[MS-KILE\]](#) section 1.9, [\[MS-NLMP\]](#) section 1.9, and [\[RFC2246\]](#) section G, respectively.

2 Messages

2.1 Transport

Because the CredSSP Protocol uses TLS, it requires that all messages exchanged between the client and server are transmitted by using a reliable transport protocol, such as TCP (as specified in [\[RFC793\]](#)).<7>

2.2 Message Syntax

The CredSSP Protocol introduces the [TSRequest](#) message. The client and server use this message to encapsulate the **SPNEGO** tokens and [TSCredentials](#) message that the client uses to delegate the user's **credentials** to the **CredSSP server** over a **TLS** connection. These messages are encoded by using ASN.1 (as specified in [\[X690\]](#)) and Distinguished Encoding Rules (DER).

2.2.1 TSRequest

The TSRequest structure is the top-most structure used by the **CredSSP client** and **CredSSP server**. It contains the **SPNEGO** tokens or **Kerberos/NTLM** messages that are passed between the client and server, and either the public key authentication messages that are used to bind to the **TLS** session or the client **credentials** that are delegated to the server. The TSRequest message is always sent over the TLS-encrypted channel between the client and server in a CredSSP Protocol exchange (see step 1 in section [3.1.5](#)).

```
TSRequest ::= SEQUENCE {  
    version      [0] INTEGER,  
    negoTokens   [1] NegoData OPTIONAL,  
    authInfo     [2] OCTET STRING OPTIONAL,  
    pubKeyAuth   [3] OCTET STRING OPTIONAL,  
    errorCode    [4] INTEGER OPTIONAL  
}
```

version: This field specifies the supported version of the CredSSP Protocol. Valid values for this field are 2 and 3.<8> If the version received is greater than the implementation understands, treat the peer as one that is compatible with the version of the CredSSP Protocol that the implementation understands.

negoTokens: A [NegoData](#) structure, as defined in section 2.2.1.1, that contains the SPNEGO tokens or Kerberos/NTLM messages that are passed between the client and server.

authInfo: A [TSCredentials](#) structure, as defined in section 2.2.1.2, that contains the user's credentials that are delegated to the server. The **authInfo** field **MUST** be encrypted under the encryption key that is negotiated under the SPNEGO package. The **authInfo** field carries the message signature and then the encrypted data.

pubKeyAuth: This field is used to assure that the public key that is used by the server during the TLS handshake belongs to the target server and not to a "man in the middle". This TLS session-binding is described in section 3.1.5. After the client completes the SPNEGO phase of the CredSSP Protocol, it uses GSS_WrapEx() for the negotiated protocol to encrypt the server's public key. The **pubKeyAuth** field carries the message signature and then the encrypted public key to the server. In response, the server uses the **pubKeyAuth** field to transmit to the client a modified version of the public key (as described in section 3.1.5) that is encrypted under the encryption key that is negotiated under SPNEGO.

errorCode: If the negotiated protocol version is 3 and the SPNEGO exchange fails on the server, this field can be used to send the NTSTATUS failure code ([\[MS-ERREF\]](#) section 2.3) to the client so that it will know what failed and be able to display a descriptive error to the user.[<9>](#)

2.2.1.1 NegoData

The NegoData structure contains the **SPNEGO** tokens ([\[MS-SPNG\]](#) section 2), the **Kerberos** messages ([\[MS-KILE\]](#) section 2), or the **NTLM** messages ([\[MS-NLMP\]](#) section 2).

```
NegoData ::= SEQUENCE OF SEQUENCE {  
    negoToken [0] OCTET STRING  
}
```

negoToken: One or more SPNEGO tokens and all Kerberos or NTLM messages, as negotiated by SPNEGO.

2.2.1.2 TSCredentials

The TSCredentials structure contains both the user's **credentials** that are delegated to the server and their type.

```
TSCredentials ::= SEQUENCE {  
    credType [0] INTEGER,  
    credentials [1] OCTET STRING  
}
```

credType: Defines the type of credentials that are carried in the **credentials** field. credType MUST be one of the following values.

Value	Meaning
1	credentials contains a TSPasswordCreds structure (section 2.2.1.2.1) that defines the user's password credentials.
2	credentials contains a TSSmartCardCreds structure (section 2.2.1.2.2) that defines the user's smart card credentials.
6	credentials contains a TSRemoteGuardCreds structure (section 2.2.1.2.3) that defines the user's redirected credentials.

credentials: Contains the user's password, smart card credentials, or Remote Credential Guard credentials in a TSPasswordCreds structure, a TSSmartCardCreds structure, or a TSRemoteGuardCreds structure, respectively.

2.2.1.2.1 TSPasswordCreds

The TSPasswordCreds structure contains the user's password **credentials** that are delegated to the server.

```
TSPasswordCreds ::= SEQUENCE {  
    domainName [0] OCTET STRING,  
    userName [1] OCTET STRING,  
    password [2] OCTET STRING  
}
```

domainName: Contains the name of the user's account **domain**.

userName: Contains the user's account name.

password: Contains the user's account password.

2.2.1.2.2 TSSmartCardCreds

The TSSmartCardCreds structure contains the user's smart card **credentials** that are delegated to the server.

```
TSSmartCardCreds ::= SEQUENCE {  
    pin            [0] OCTET STRING,  
    cspData        [1] TSCspDataDetail,  
    userHint       [2] OCTET STRING OPTIONAL,  
    domainHint     [3] OCTET STRING OPTIONAL  
}
```

pin: Contains the user's smart card PIN.

cspData: A [TSCspDataDetail structure](#) that contains information about the cryptographic service provider (CSP).

userHint: Contains the user's account hint.

domainHint: Contains the user's **domain** name to which the user's account belongs. This name could be entered by the user when the user is first prompted for the PIN.

2.2.1.2.2.1 TSCspDataDetail

The TSCspDataDetail structure contains CSP information used during smart card logon.

```
TSCspDataDetail ::= SEQUENCE {  
    keySpec        [0] INTEGER,  
    cardName       [1] OCTET STRING OPTIONAL,  
    readerName     [2] OCTET STRING OPTIONAL,  
    containerName  [3] OCTET STRING OPTIONAL,  
    cspName        [4] OCTET STRING OPTIONAL  
}
```

keySpec: Defines the specification of the user's smart card.

cardName: Specifies the name of the smart card.

readerName: Specifies the name of the smart card reader.

containerName: Specifies the name of the certificate container.

cspName: Specifies the name of the CSP.

2.2.1.2.3 TSRemoteGuardCreds

The TSRemoteGuardCreds structure contains a logon credential and supplemental credentials provided by security packages. The format of the individual credentials depends on the package that provided them. The logon credential will be passed to the Negotiate package, which will in turn pass it to the default authentication package. [<10>](#)

```
TSRemoteGuardCreds ::= SEQUENCE{  
    logonCred       [0] TSRemoteGuardPackageCred,  
    supplementalCreds [1] SEQUENCE OF TSRemoteGuardPackageCred OPTIONAL,
```

}

logonCred: Contains a logon credential for the user.

supplementalCreds: Contains supplemental credentials for other security packages.

2.2.1.2.3.1 TSRemoteGuardPackageCred

The TSRemoteGuardPackageCred structure contains credentials for a specific security package.

```
TSRemoteGuardPackageCred ::= SEQUENCE{  
    packageName [0] OCTET STRING,  
    credBuffer [1] OCTET STRING,  
}
```

packageName: The name of the package for which these credentials are intended. [<11>](#11)

credBuffer: A byte buffer containing the credentials in a format that SHOULD [<12>](#12) be specified by the CredSSP server operating system for the package that provided them.

3 Protocol Details

3.1 Common Details

3.1.1 Abstract Data Model

The CredSSP Protocol requires the client to perform a policy check to verify that the target server is **trusted** to receive the user's **credentials**.

3.1.2 Timers

There are no timers in the CredSSP Protocol.

3.1.3 Initialization

There are no changes to the initialization of **TLS**, **Kerberos**, **NTLM**, and **SPNEGO**, as specified in [\[RFC2246\]](#), [\[MS-KILE\]](#), [\[MS-NLMP\]](#), and [\[MS-SPNG\]](#), respectively.

3.1.4 Higher-Layer Triggered Events

The CredSSP Protocol is triggered by a higher-layer **application protocol**, such as RDP, for delegating the user's **credentials** to the target server.

3.1.5 Processing Events and Sequencing Rules

The CredSSP Protocol is carried out in the following sequence and is subject to the protocol rules that are described in the following steps:

1. The **CredSSP client** and **CredSSP server** first complete the **TLS** handshake, as specified in [\[RFC2246\]](#). After the handshake is complete, all subsequent CredSSP Protocol messages are encrypted by the TLS channel. The CredSSP Protocol does not extend the TLS wire protocol. As part of the TLS handshake, the CredSSP server does not request the client's X.509 certificate (thus far, the client is anonymous). Also, the CredSSP Protocol does not require the client to have a commonly **trusted certification authority** root with the CredSSP server. Thus, the CredSSP server MAY use, for example, a self-signed X.509 certificate.[<13>](#)
2. Over the encrypted TLS channel, the **SPNEGO**, **Kerberos**, or **NTLM** handshake between the client and server completes authentication and establishes an encryption key that is used by the SPNEGO confidentiality services, as specified in [\[RFC4178\]](#). All SPNEGO tokens or Kerberos/NTLM messages as well as the underlying encryption algorithms are opaque to the calling application (the CredSSP client and CredSSP server). The wire protocol for SPNEGO, Kerberos, and NTLM is specified in [\[MS-SPNG\]](#), [\[MS-KILE\]](#), and [\[MS-NLMP\]](#), respectively.

The SPNEGO tokens or Kerberos/NTLM messages exchanged between the client and the server are encapsulated in the **negoTokens** field of the [TSRequest](#) structure (section 2.2.1). Both the client and the server use this structure as many times as necessary to complete the authentication exchange.[<14>](#)

Note During this phase of the protocol, the OPTIONAL **authInfo** field is omitted from the TSRequest structure by the client and server; the OPTIONAL **pubKeyAuth** field is omitted by the client unless the client is sending the last SPNEGO token or Kerberos/NTLM message. If the client is sending the last SPNEGO token or Kerberos/NTLM message, the TSRequest structure MUST have both the **negoTokens** and the **pubKeyAuth** fields filled in.

Note If the SPNEGO handshake fails on the server side and the client sent a version of 3 or greater, the server SHOULD send a TSRequest structure back to the client for which the **errorCode** field is populated with an unsuccessful NTSTATUS code ([\[MS-ERREF\]](#) section 2.3). The NTSTATUS code indicates the reason for the failure to the client. If the client receives a TSRequest message with the **errorCode** present, it must immediately fail with the provided status code and cease all further processing.

3. The client encrypts the public key it received from the server (contained in the X.509 certificate) in the TLS handshake from step 1, by using the confidentiality support of the authentication protocol. The public key that is encrypted is the ASN.1-encoded **SubjectPublicKey** sub-field of **SubjectPublicKeyInfo** from the X.509 certificate, as specified in [\[RFC3280\]](#) section 4.1. The encrypted key is encapsulated in the **pubKeyAuth** field of the TSRequest structure and is sent over the TLS channel to the server.

Note During this phase of the protocol, the OPTIONAL **authInfo** field is omitted from the TSRequest structure; the client MUST send its last SPNEGO token or Kerberos/NTLM message to the server in the **negoTokens** field (see step 2) along with the encrypted public key in the **pubKeyAuth** field.

4. After the server receives the public key in step 3, it first verifies that it has the same public key that it used as part of the TLS handshake in step 1. The server then adds 1 to the first byte representing the public key (the ASN.1 structure corresponding to the **SubjectPublicKey** field, as described in step 3) and encrypts the binary result by using the authentication protocol's encryption services. Due to the addition of 1 to the binary data, and encryption of the data as a binary structure, the resulting value might not be valid ASN.1-encoded values. The encrypted binary data is encapsulated in the **pubKeyAuth** field of the TSRequest structure and is sent over the encrypted TLS channel to the client. The addition of 1 to the first byte of the public key is performed so that the client-generated **pubKeyAuth** message cannot be replayed back to the client by an attacker.

Note During this phase of the protocol, the OPTIONAL **authInfo** and **negoTokens** fields are omitted from the TSRequest structure.

5. After the client successfully verifies server authenticity by performing a binary comparison of the data from step 4 to that of the data representing the public key from the server's X.509 certificate (as specified in [\[RFC3280\]](#), section 4.1), it encrypts the user's **credentials** (either password or smart card PIN) by using the authentication protocol's encryption services. The resulting value is encapsulated in the **authInfo** field of the TSRequest structure and sent over the encrypted TLS channel to the server.

The [TSCredentials](#) structure within the **authInfo** field of the TSRequest structure MAY contain a [TSPasswordCreds](#), [TSSmartCardCreds](#), or [TSRemoteGuardCreds](#) structure, but MUST NOT contain more than one.

Note During this phase of the protocol, the OPTIONAL **pubKeyAuth** and **negoTokens** fields are omitted from the TSRequest structure.

Note If the credentials were of type TSRemoteGuardCreds, the TLS channel continues to be used for redirected authentication requests, as specified in [\[MS-RDPEAR\]](#).

3.1.6 Timer Events

There are no timer events for the CredSSP Protocol.

3.1.7 Other Local Events

There are no other local events that impact the operation of this protocol.

4 Protocol Examples

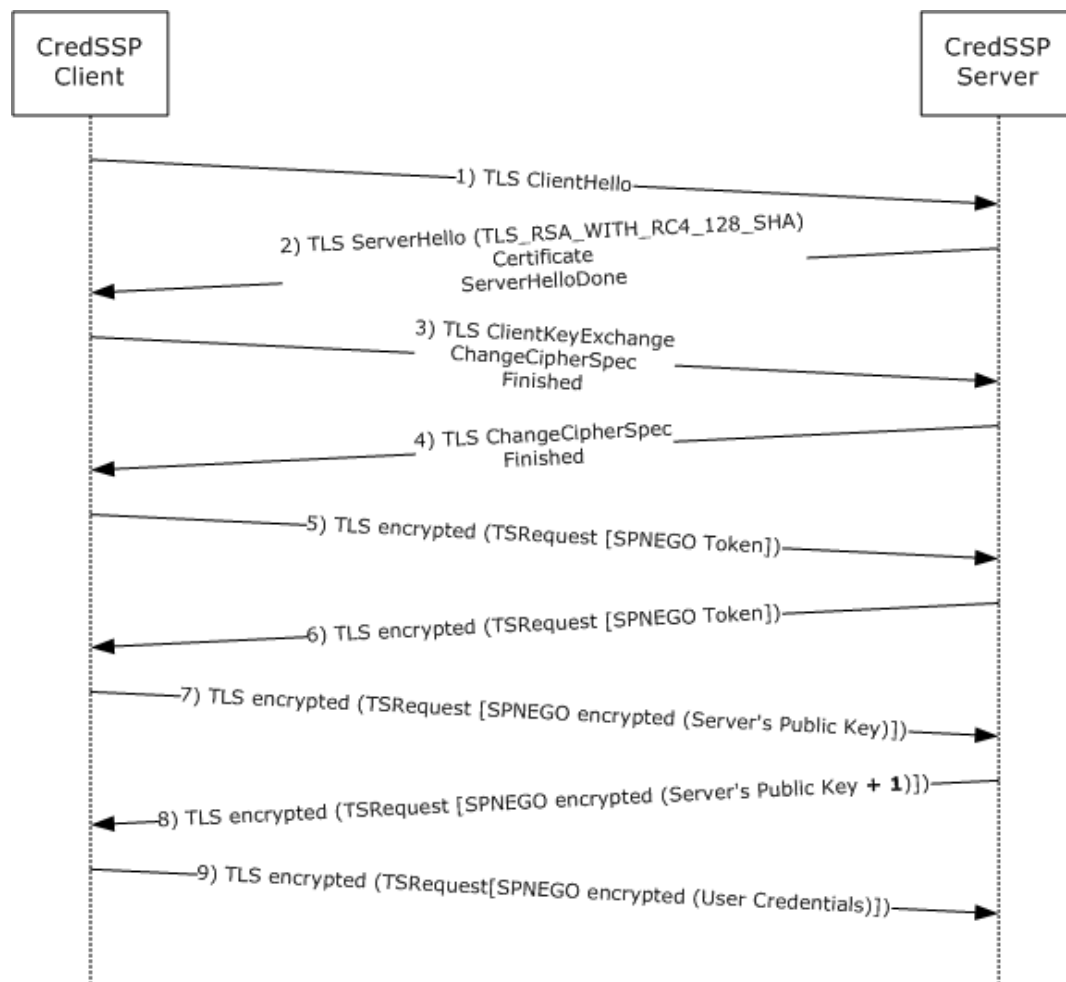


Figure 1: CredSSP negotiation sequence using SPNEGO

Steps 1 through 4: The **CredSSP client** and **CredSSP server** complete the **TLS** handshake. When the handshake is complete, all subsequent CredSSP Protocol messages are encrypted by the TLS channel, as specified in [\[RFC2246\]](#). As part of the TLS handshake, the CredSSP server does not request the client's X.509 certificate (thus far, the client is anonymous). Furthermore, the CredSSP Protocol does not require the client to have a commonly **trusted certification authority** root with the CredSSP server.

Steps 5 and 6: Over the encrypted TLS channel, the **SPNEGO** handshake between the client and server completes **mutual authentication** and establishes an encryption key.

Steps 7 and 8: The public key from the server's X.509 certificate in the TLS handshake is verified that it belongs to the server (and not to a "man-in-the-middle" attacker).

Step 9: The client sends its **credentials** to the target server that is protected under SPNEGO and TLS encryption. A sample unencrypted dump (ASN.1DER encoded) of the **TSRequest.authInfo** structure follows. This is encrypted on the wire.

```
30 82 01 0f a0 03 02 01-02 a1 82 01 06 04 82 01 0.....
```

```

02 30 81 ff a0 1a 04 18-62 00 62 00 62 00 62 00 .0.....b.b.b.b.
62 00 62 00 62 00 62 00-62 00 62 00 62 00 62 00 b.b.b.b.b.b.b.b.
a1 81 e0 30 81 dd a0 03-02 01 01 a2 2e 04 2c 4f ...0.....,O
00 4d 00 4e 00 49 00 4b-00 45 00 59 00 20 00 43 .M.N.I.K.E.Y. .C
00 61 00 72 00 64 00 4d-00 61 00 6e 00 20 00 33 .a.r.d.M.a.n. .3
00 78 00 32 00 31 00 20-00 30 00 a3 50 04 4e 6c .x.2.1. .0..P.Nl
00 65 00 2d 00 4d 00 53-00 53 00 6d 00 61 00 72 .e.-.M.S.S.m.a.r
00 74 00 63 00 61 00 72-00 64 00 55 00 73 00 65 .t.C.a.r.d.U.s.e
00 72 00 2d 00 38 00 62-00 64 00 61 00 30 00 31 .r.-.8.b.d.a.0.1
00 39 00 66 00 2d 00 31-00 32 00 36 00 36 00 2d .9.f.-.1.2.6.6.-
00 2d 00 35 00 33 00 32-00 36 00 38 00 a4 54 04 .-.5.3.2.6.8..T.
52 4d 00 69 00 63 00 72-00 6f 00 73 00 6f 00 66 RM.i.c.r.o.s.o.f
00 74 00 20 00 42 00 61-00 73 00 65 00 20 00 53 .t. .B.a.s.e. .S
00 6d 00 61 00 72 00 74-00 20 00 43 00 61 00 72 .m.a.r.t. .C.a.r
00 64 00 20 00 43 00 72-00 79 00 70 00 74 00 6f .d. .C.r.y.p.t.o
00 20 00 50 00 72 00 6f-00 76 00 69 00 64 00 65 . .P.r.o.v.i.d.e
00 72 00

```

The transformed **TSRequest.authinfo** structure is as follows:

```

Total Size: 275
- - - - - TSCredentials - - - - -
    tscredentials_len: 0X10F=271
    credType: 0X2=2
    creds_len: 0X106=262

- - - - - TSSmartCardCreds - - - - -
    pin: [bbbbbbbbbbbb]
    csp len: 0XE0=224

- - - - - TSCspDataDetail - - - - -
    keySpec: 0X1=1
    cardName not present
    readerName: [OMNIKEY CardMan 3x21 0]
    containerName: [le-MSSmartcardUser-8bda019f-1266--53268]
    cspName: [Microsoft Base Smart Card Crypto Provider]

- - - - - TSSmartCardCreds ctd - - - - -
    userHint not present
    domainHint not present
Bytes Remaining: 275-275=0

```

5 Security

5.1 Security Considerations for Implementers

The purpose of the CredSSP Protocol is to delegate a user's clear text password or pin from the **CredSSP client** to a **CredSSP server**, and it is important to make certain that the server receiving the **credentials** does not fall under an attacker's control. Although **trust** can be facilitated via **public key infrastructure (PKI)**, the **Kerberos** protocol, or **NTLM**, this does not mean that the target server is trusted with the user's credentials, and additional policy settings should be considered.

Additional policy settings can include defining the servers that are trusted with the user's credentials, the security strength of the authentication mechanisms allowed to be negotiated under **SPNEGO** [\[MS-SPNG\]](#), and the allowed methods by which the CredSSP client can obtain the user's credentials.

5.2 Index of Security Parameters

There are no security parameters in the CredSSP Protocol.

6 Appendix A: Product Behavior

The information in this specification is applicable to the following Microsoft products or supplemental software. References to product versions include updates to those products.

- Windows XP operating system Service Pack 3 (SP3)
- Windows Vista operating system
- Windows Server 2008 operating system
- Windows 7 operating system
- Windows Server 2008 R2 operating system
- Windows 8 operating system
- Windows Server 2012 operating system
- Windows 8.1 operating system
- Windows Server 2012 R2 operating system
- Windows 10 operating system
- Windows Server 2016 operating system
- Windows Server operating system

Exceptions, if any, are noted in this section. If an update version, service pack or Knowledge Base (KB) number appears with a product name, the behavior changed in that update. The new behavior also applies to subsequent updates unless otherwise specified. If a product edition appears with the product version, behavior is different in that product edition.

Unless otherwise specified, any statement of optional behavior in this specification that is prescribed using the terms "SHOULD" or "SHOULD NOT" implies product behavior in accordance with the SHOULD or SHOULD NOT prescription. Unless otherwise specified, the term "MAY" implies that the product does not follow the prescription.

[<1> Section 1.3](#): The **CredSSP client** is present on all Windows products according to the applicability list at the beginning of this section. The **CredSSP server** is not present on Windows XP SP3.

[<2> Section 1.3](#): In Windows, the policy settings for the CredSSP client are expressed in terms of **service principal names (SPNs)**, which define the servers that the client is allowed to send the user's **credentials** to.

[<3> Section 1.4](#): Windows CredSSP clients never send **Kerberos**.

[<4> Section 1.4](#): By default, **SPNEGO** has the Kerberos Protocol and **NTLM** ([\[MS-NLMP\]](#)) available. With the exception of Windows XP SP3, the interface for authentication protocols is open and extensible.

[<5> Section 1.5](#): In Windows, the CredSSP client first checks whether the user's credentials were passed in by the calling application. If so, these credentials are used by the client. If no credentials were passed in by the calling application, the CredSSP Protocol uses credentials that are stored locally in the credentials manager that is associated with the target server. If no credentials are available for the target server, the CredSSP client uses the user's default credentials, which are entered when the user first logs on to the operating system.

<6> [Section 1.5](#): In Windows, the SPNEGO client negotiates Kerberos or NTLM. The Kerberos Protocol is always preferred over NTLM. NTLM is negotiated only if one or both parties do not support the Kerberos Protocol, as specified in [MS-NLMP] section 1.5 and in [\[MS-KILE\]](#).

<7> [Section 2.1](#): The Windows component that implements the CredSSP Protocol is transport-independent—it simply returns opaque CredSSP data back to the calling application. It is up to the calling application to send this CredSSP Protocol data over a reliable transport to its CredSSP Protocol peer.

<8> [Section 2.2.1](#): In Windows XP SP3, Windows Vista, Windows Server 2008, Windows 7, Windows Server 2008 R2, Windows 8, and Windows Server 2012, only version 2 of the CredSSP Protocol is supported.

<9> [Section 2.2.1](#): Windows XP SP3, Windows Vista, Windows Server 2008, Windows 7, Windows Server 2008 R2, Windows 8, and Windows Server 2012 do not implement the **errorCode** field.

<10> [Section 2.2.1.2.3](#): The TSRemoteGuardCreds structure is not supported on Windows XP SP3, Windows Vista, Windows Server 2008, Windows 7, Windows Server 2008 R2, Windows 8, Windows Server 2012, Windows 8.1, Windows Server 2012 R2, Windows 10 v1507 operating system, or Windows 10 v1511 operating system.

<11> [Section 2.2.1.2.3.1](#): Authentication packages provided by Microsoft can be used by Windows CredSSP servers.

<12> [Section 2.2.1.2.3.1](#): In Windows, logon credentials (in the **logonCred** field of TSRemoteGuardCreds) are required in the KERB_TICKET_LOGON structure where the KRB_CRED message ([\[RFC4120\]](#), section 5.8.1) in the TicketGrantingTicket member is using the KERB_RPC_ENCRYPTION_KEY ([\[MS-RDPEAR\]](#) section 2.2.1.2.1) for the EncryptionKey. Supplemental credentials (in the **supplementalCreds** field of TSRemoteGuardCreds) are required in the following structure:

```
typedef struct _NTLM_REMOTE_SUPPLEMENTAL_CREDENTIAL {
    ULONG Version;
    ULONG Flags;
    MSV1_0_CREDENTIAL_KEY_TYPE reserved;
    MSV1_0_CREDENTIAL_KEY reserved;
    ULONG reservedsize;
    [size_is(reservedSize)] UCHAR* reserved;
} NTLM_REMOTE_SUPPLEMENTAL_CREDENTIAL;
```

Version: A 32-bit unsigned integer that defines the credential version. This field is 0xFFFF0002.

Flags: A 32-bit unsigned integer containing flags that define the credential options. At least one of the following values is required.

0	1	2	3	4	5	6	7	8	9	10	1	2	3	4	5	6	7	8	9	20	1	2	3	4	5	6	7	8	9	30	1
0	0	0	0	0	0	0	0	0	0	0	0	0	0	0	0	0	0	0	0	0	0	0	0	0	0	0	0	0	0	N	L

Where the bits are defined as follows:

Value	Description
L	Indicates that the LM OWF member is present and valid.

Value	Description
N	Indicates that the NT OWF member is present and valid.

All other bits are set to zero and ignored on receipt.

<13> [Section 3.1.5](#): With the exception of Windows XP SP3, the CredSSP server can be configured by using any X.509 certificate that is **trusted** by the client based on a commonly trusted **certificate authority (CA)** root or by using a self-signed certificate.

<14> [Section 3.1.5](#): The Kerberos or NTLM authentication package is negotiated by SPNEGO. Therefore, the encryption key that is established under SPNEGO is either a Kerberos subsession key or an NTLM session key that is shared by both sides upon completion of the SPNEGO exchange.

7 Change Tracking

This section identifies changes that were made to this document since the last release. Changes are classified as Major, Minor, or None.

The revision class **Major** means that the technical content in the document was significantly revised. Major changes affect protocol interoperability or implementation. Examples of major changes are:

- A document revision that incorporates changes to interoperability requirements.
- A document revision that captures changes to protocol functionality.

The revision class **Minor** means that the meaning of the technical content was clarified. Minor changes do not affect protocol interoperability or implementation. Examples of minor changes are updates to clarify ambiguity at the sentence, paragraph, or table level.

The revision class **None** means that no new technical changes were introduced. Minor editorial and formatting changes may have been made, but the relevant technical content is identical to the last released version.

The changes made to this document are listed in the following table. For more information, please contact dochelp@microsoft.com.

Section	Description	Revision class
2.2.1.2.3.1 TSRemoteGuardPackageCred	7443 : Added Windows-specific behavior for structure fields.	Major
6 Appendix A: Product Behavior	Added Windows Server to the list of applicable products.	Major

8 Index

A

[Abstract data model](#) 15
[Applicability](#) 10

C

[Capability negotiation](#) 10
[Change tracking](#) 23

D

[Data model - abstract](#) 15

E

[Examples - overview](#) 17

F

[Fields - vendor-extensible](#) 10

G

[Glossary](#) 6

H

[Higher-layer triggered events](#) 15

I

[Implementer - security considerations](#) 19
[Index of security parameters](#) 19
[Informative references](#) 8
[Initialization](#) 15
[Introduction](#) 6

L

[Local events](#) 16

M

[Message processing](#) 15
Messages
 [syntax](#) 11
 [transport](#) 11
 [TSRequest](#) 11

N

[NegoData](#) 12
[Normative references](#) 7

O

[Overview \(synopsis\)](#) 8

P

[Parameters - security index](#) 19
[Preconditions](#) 9
[Prerequisites](#) 9
[Product behavior](#) 20
Protocol
 [abstract data model](#) 15
 [higher-layer triggered events](#) 15
 [initialization](#) 15
 [local events](#) 16
 [message processing](#) 15
 [sequencing rules](#) 15
 [timer events](#) 16
 [timers](#) 15

R

[References](#) 7
 [informative](#) 8
 [normative](#) 7
[Relationship to other protocols](#) 9

S

Security
 [implementer considerations](#) 19
 [parameter index](#) 19
[Sequencing rules](#) 15
[Standards assignments](#) 10
[Syntax](#) 11

T

[Timer events](#) 16
[Timers](#) 15
[Tracking changes](#) 23
[Transport](#) 11
[Triggered events - higher-layer](#) 15
[TSCredentials](#) 12
[TSCspDataDetail](#) 13
[TSPasswordCreds](#) 12
[TSRequest](#) 11
[TSRequest message](#) 11
[TSSmartCardCreds](#) 13

V

[Vendor-extensible fields](#) 10
[Versioning](#) 10